

## Professional registration with the Science Council

**RSciTech CSci**  
 Registered Science Technician Chartered Scientist  
**RSci CSciTeach**  
 Registered Scientist Chartered Science Teacher  
**Rob Butler CSciTeach FCCT**

[www.sciencecouncil.org](http://www.sciencecouncil.org)



1

## Professional registration workshop (1)

This workshop will introduce delegates to Professional Recognition with the Science Council. By the end of the workshop attendees will:

- Be given an overview of the Science Council
- Be shown the benefits of professional recognition and the reasons to apply
- How application and assessment for the professional registers works
- An overview of the required standards needed to be awarded professional recognition
- Be starting to identify which register (RSciTech, RSci, CSci) to apply for based on their skills and experience
- The requirements to maintain professional registration

[www.sciencecouncil.org](http://www.sciencecouncil.org)



2

## About me



- Biologist – BSc (Hons) University of Leeds
- Science teacher for over 20 years including being a deputy head for 6 years
- Field Officer for the Association for Science Education (one of the professional bodies that is a member of the Science Council)
- Secondary lead for Derbyshire & Nottinghamshire Science Learning Partnerships
- Applicant Support Mentor with Science Council
- Chartered Science Teacher (CSciTeach) awarded 2011

[www.sciencecouncil.org](http://www.sciencecouncil.org)



3

## What is the Science Council?

- Registered charity with a Royal Charter
- Three priority areas
  - Enhance professionalism in science via registration
  - Voice on policy issues in science e.g. diversity, vocational routes, degree provision
  - Support member bodies to be more effective
- A membership organisation of 40+ UK professional bodies and learned societies
- Licenses professional bodies to award RSciTech, RSci, CSci and CSciTeach

[www.sciencecouncil.org](http://www.sciencecouncil.org)



4

## Employer champions

The Science Council's Employer Champion programme provides a package of support for employers that have made the commitment to support their scientific staff to become professionally registered.

- Champion the value of professional registration among internal stakeholders and encourage other stakeholders to invest in professional registration.
- Ensure that staff have access to continuing professional development opportunities, which enable them to achieve and retain professional registration.
- Support staff to join the most suitable professional body for their role.
- Formally recognise staff who have achieved professional registration.

[www.sciencecouncil.org](http://www.sciencecouncil.org)



5

## Our employer champions



[www.sciencecouncil.org](http://www.sciencecouncil.org)



6

## Our employer champions



www.sciencecouncil.org



7

## What is professional registration?

- Independent recognition of your achievements and maintaining the exact standards required to join the global community of professional scientists
- Registration is a voluntary means of demonstrating your professionalism, and involves being held to account **by your peers** for your abilities and adherence to ethical standards
- Recognised across all strands of the science economy
- Your name will be entered on one of four registers



www.sciencecouncil.org



8

## Professional registration with the Science Council



www.sciencecouncil.org <https://www.youtube.com/watch?v=4IzDfFQDZo>



9

## Why should you become registered?

- Recognition for your professional skills and professionalism
- Demonstrate you maintain, develop and extend your knowledge and competence
- Demonstrate your ethical credentials
- Recognition beyond your workplace and professional body
- Increase your chances of promotion and career progression
- Be part of a growing community of scientists across all sectors & disciplines
- Increase your confidence and skills

www.sciencecouncil.org



10

## Why apply for professional registration?

"It will present new opportunities and better career prospects"

"Demonstrate a certain level of competence and professionalism that is widely recognised"

"Demonstrate the knowledge and skills I have acquired over time during my career"

"Improve my employability"

"Raise awareness of exactly what a science technician does, how important their work is and how much they are depended on"

"Demonstrate my commitment to the profession"

www.sciencecouncil.org



11

## What people are saying about registration

"To be approached by my manager to become a Registered Scientist was amazing. You kind of feel that he has trust in me, that he knows I deserve it and I've got enough skills and knowledge to become one, so it feels absolutely great, amazing!"

"Being actively involved in your professional body's events is an amazing experience. When you are recognised and feel engaged you want to do more. You are inspired; you feel that you are a part of something great."

"The Registered Scientist designation indicates individual commitment to upholding the Science Council values while fostering continued professional development; something which I feel is recognised by clients and academic institutions alike."

www.sciencecouncil.org



12



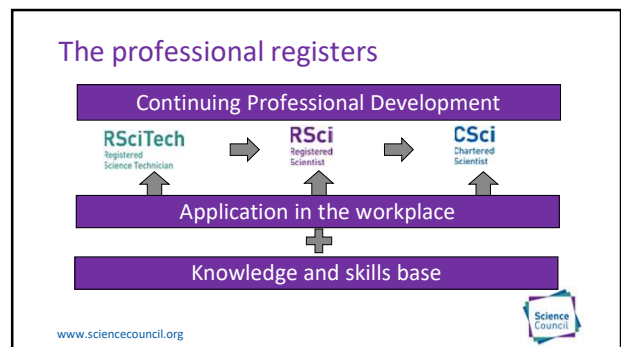
13



14



15



16

### Does it cost money?

The application and membership fee can vary if you are applying directly via your professional body but the registration fee will be the same.  
The following fees apply if you are applying via the Science Council's online system

Application	Registration	Membership
£15 for RSciTech, RSci, CSci and CSciTeach	RSciTech £15 RSci £20 CSci and CSciTeach £45	£55 RSciTech and RSci for initial membership of a licensed professional body The membership fee for CSci and CSciTeach varies per licensed professional body

www.sciencecouncil.org

17

### Joining in

[pollev.com/robbutler574](http://pollev.com/robbutler574)

www.sciencecouncil.org

18

## Competence

Competence means you have a sufficiency of knowledge and skills that enable you to act in a wide variety of situations. Simply put, you have the skills that enable you to do all aspects of your job effectively. At the Science Council, we break that down into five areas.

- A. Application of knowledge and understanding
- B. Personal Responsibility
- C. Interpersonal Skills
- D. Professional Practice
- E. Professionalism

[www.sciencecouncil.org](http://www.sciencecouncil.org)



19

## Competence activity

	RSciTech Registered Science Technician	RSci Registered Scientist	CSci Chartered Scientist
A Application of knowledge & understanding			
B Personal responsibility			
C Interpersonal skills			
D Professional practice			
E Professionalism			

[www.sciencecouncil.org](http://www.sciencecouncil.org)



20

## What you need to demonstrate to become an RSciTech

- Registered Science Technician (RSciTech) is an award to provide recognition for those working in technical roles.
- Candidates will typically be applying knowledge to their roles that is equivalent to at least QCF level 3, if they also have a qualification at this level or above it will contribute to their applications.
- The award provides recognition in its own right but can also be a springboard to recognition as a Registered Scientist or Chartered Scientist.



[www.sciencecouncil.org](http://www.sciencecouncil.org)

21

## What you need to demonstrate to become an RSci

- Registered Scientist (RSci) is a brand new award to provide recognition for those working in scientific and higher technical roles.
- Candidates will typically be qualified to at least QCF level 5 and will be applying this knowledge to their roles. It provides recognition in its own right but can also be a springboard to recognition as a Chartered Scientist.



[www.sciencecouncil.org](http://www.sciencecouncil.org)

22

## What you need to demonstrate to become a CSci

- Chartered Scientist (CSci) is a well established award, with over 15,000 scientists having achieved it since its launch in 2004.
- Candidates will typically be in senior scientific or managerial roles, qualified to at least QCF level 7 and applying their knowledge in their roles. Chartered status is a well established benchmark across the professions.



[www.sciencecouncil.org](http://www.sciencecouncil.org)

23

## What happens when I finish my report?

In order to gain professional registration you will need to complete a **competence report** which will then be assessed by 2 assessors who are registered scientists themselves (at the same or a higher level)



[www.sciencecouncil.org](http://www.sciencecouncil.org)

24

## Code of Professional Conduct and CPD

[www.sciencecouncil.org](http://www.sciencecouncil.org)



25

## Code of conduct

Registrants must:

- Exercise their professional skills and judgement to the best of their ability and discharge their professional responsibilities with integrity, serving as an example to others.
- Have regard at all times to the public interest.
- Do all in their power to ensure that their professional activities do not put the health and safety of others at risk.
- When called upon to give a professional opinion, do so with objectivity and reliability.
- Never engage in corrupt practice.
- Undertake appropriate Continuing Professional Development (CPD) and be able to demonstrate this to others.
- Further the interests of and maintain the dignity and welfare of their Licensed Body and profession.

[www.sciencecouncil.org](http://www.sciencecouncil.org)



26

## The Science Council Continuing Professional Development Standards for Registrants

**The five stages for CPD revalidation**

**Standard S1:** A registrant must maintain a continuous, up-to-date and accurate record of their CPD activities.

**Standard S2:** A registrant must demonstrate that their CPD activities are a mixture of learning activities relevant to current or future practice.

**Standard S3:** A registrant must seek to ensure that their CPD has contributed to the quality of their practice.

**Standard S4:** A registrant must seek to ensure that their CPD benefits the users of the service (employee, customer, student etc).

**Standard S5:** A registrant must present a written profile containing evidence of their CPD upon request.

[www.sciencecouncil.org](http://www.sciencecouncil.org)



27

## What is CPD?

**Work based learning**

Experiential learning, in-service training, shadowing, discussions, supervising colleagues, secondments, appraisals

**Professional activity**

Involvement in a professional body, organise a conference/meeting, being an examiner, lecturing, coaching or mentoring

**Formal/educational**

Taking qualifications, attending courses, writing articles/papers, preparing materials for training courses

**Self-directed learning**

Reading books/journals, reviewing or summarising articles, reflective practice

<http://www.sciencecouncil.org/web/wp-content/uploads/2016/04/CScl-CPD-Standards-Guidance.pdf>  
[www.sciencecouncil.org](http://www.sciencecouncil.org)



28

## Keeping a log of CPD

- Keep and update a live log of your development activities
- No set structure- do what works for you

Activity: description, date	How my practice benefited	How the practice of others benefited
-		
-		
-		
-		

[www.sciencecouncil.org](http://www.sciencecouncil.org)



29

## Choosing a supporter

Your application needs to be supported by a someone who can attest to the information you have provided - the sort of person you would ask for a professional reference should you need one. They should be familiar with your work.

This will most likely be your line manager, however a senior colleague or client who knows the quality of your work may also be appropriate.

Your supporter should have enough scientific knowledge and expertise to be justified in supporting your application. If possible your supporter should be a member of a relevant professional body and hold either Registered or Chartered status with the Science Council, this may help you as they will understand what professional standards are required.

Whoever you choose, **you must get their permission** before providing us with their contact details. If other people in your team are also applying for professional registration, your supporter may be supporting their applications as well. This is fine, but you may need to be sensitive to how busy they are.

<http://www.sciencecouncil.org/nominated-supporter/>  
[www.sciencecouncil.org](http://www.sciencecouncil.org)



30

## Why apply for professional registration?

"Gives my company, my colleagues and fellow food scientists and nutritionists confidence that I am truly an expert"

"Enhance career progression and open future opportunities"

"Tells your peers, employer and the public that you have a background, training, level of competence and professional approach to your career"

"Opportunity to enter into a dialogue with other science professionals on an equal footing"

"Demonstrate my commitment towards CPD"

[www.sciencecouncil.org](http://www.sciencecouncil.org)



31

## [www.sciencecouncil.org/apply](http://www.sciencecouncil.org/apply)



[www.sciencecouncil.org](http://www.sciencecouncil.org)



32

## Getting started

- **Website:** [www.sciencecouncil.org](http://www.sciencecouncil.org)
- **Email:** [registration@sciencecouncil.org](mailto:registration@sciencecouncil.org)
- **Me:** [r.butler@sciencecouncil.org](mailto:r.butler@sciencecouncil.org)
- **Supporting materials:** <http://j.mp/sc-prof-reg>



[www.sciencecouncil.org](http://www.sciencecouncil.org)



33