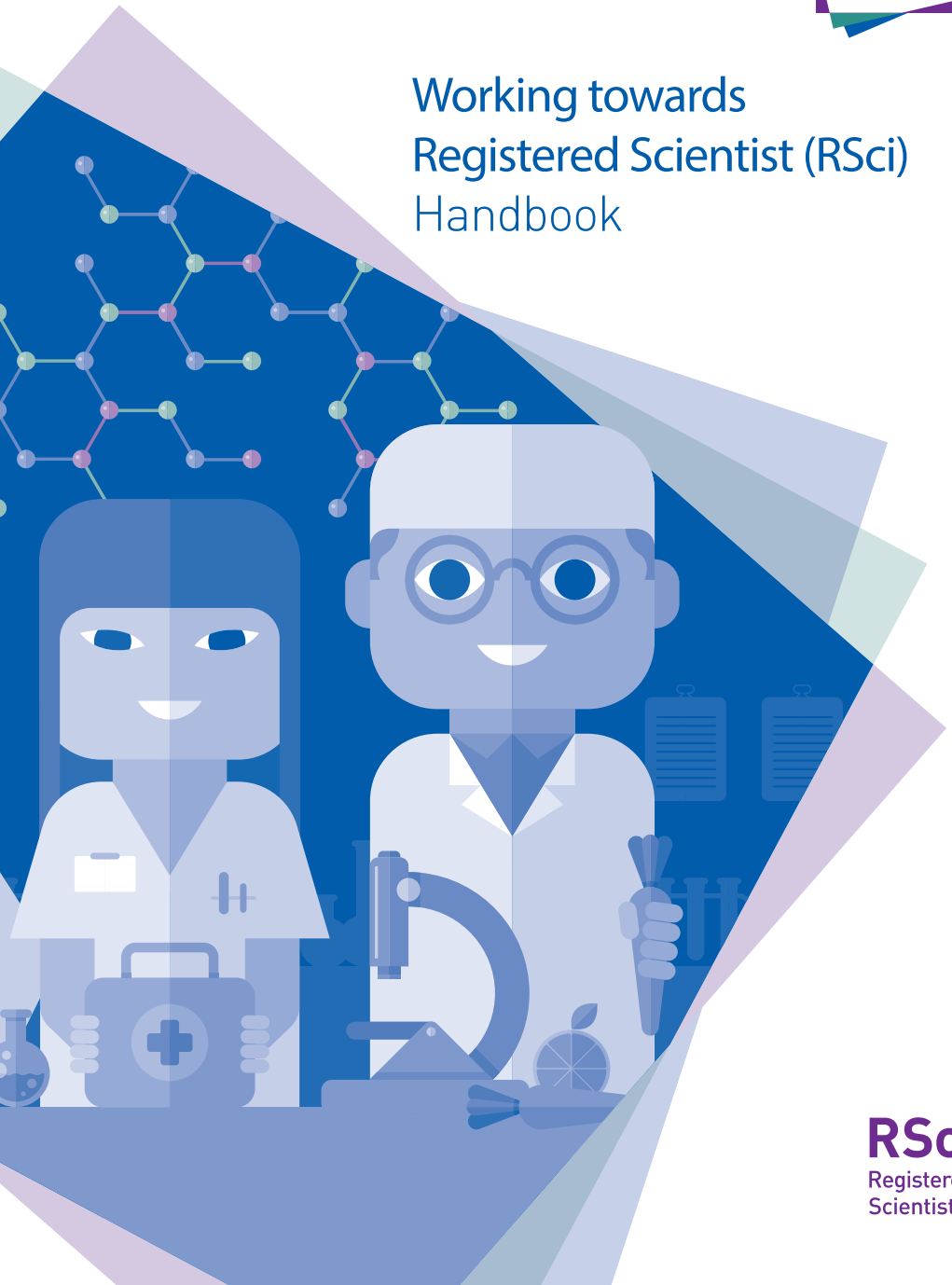




Working towards Registered Scientist (RSci) Handbook



RSci
Registered
Scientist

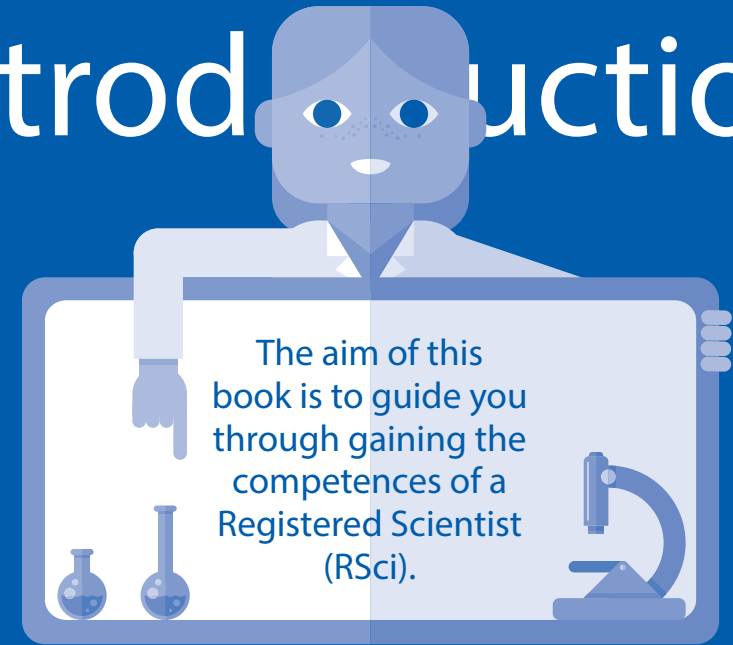
My name

If this handbook goes astray please contact

My e-mail

My phone number

Introduction



Professional registration can boost your chances of employment and promotion as it shows dedication to a career in science.

RSci is a recognised award that acknowledges the vocational skills that you gain through work, alongside your academic knowledge. RSci status is valued by employers, as it demonstrates your commitment to professional standards and development.

To gain Registered Scientist status, you have to provide evidence of having achieved sixteen competences. As you gain further experience throughout your job you will be able to complete more competences. Once you have met

them all, you can start your application online.

This handbook allows you to make the most of your employment, as you are able to record and track your experiences from day one. This should encourage you to adopt a more organised approach to identifying your strengths and areas for development.

Society is becoming increasingly reliant on science and technology: medical research, artificial intelligence, sustainability and more.

With so many varied and interesting opportunities available within science, there has never been a more fascinating time to be a scientist.

How to use this handbook

There are five sections, broken down into sixteen competences, which cover the five areas of professional standards.

1 Interpersonal and Communication Skills

- Can you communicate effectively within the workplace?
- Do you demonstrate good interpersonal skills?
- Do you demonstrate an ability to resolve problems?

2 Responsibility

- Can you work individually but recognise your limits?
- Do you take responsibility for working safely?
- Do you make sure quality standards are upheld?
- Can you take responsibility for planning a course of action?

3 Knowledge and Understanding

- Do you maintain a strong scientific knowledge?
- Can you adapt your scientific knowledge to new areas?
- Do you use pre-existing scientific theories to propose solutions?

4

Professional Practice

- Why do you carry out certain tasks in a specific manner?
- How do you contribute to helping your workplace run efficiently?
- How do you help identify problems and implement solutions?
- How do you attempt to work more efficiently?

5

Professionalism

- Do you comply with professional codes of conduct?
- How do you enhance your own professional development?

There is no correct order to fill in the book! As you gain more experience you will be able to successfully fulfil the different requirements.

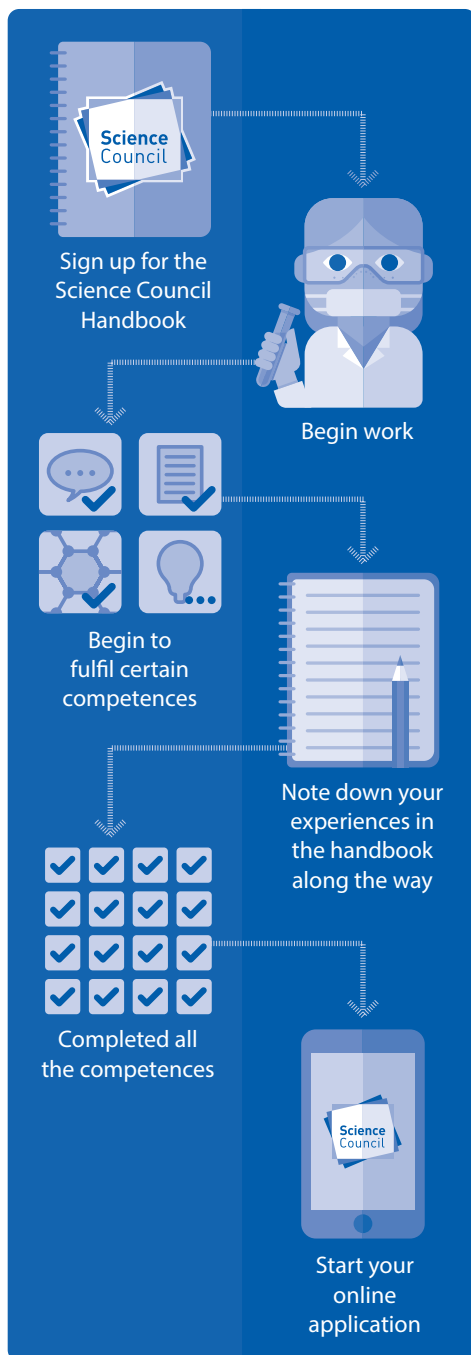
This handbook may take you a while to complete, as you will not have developed all the necessary skills from your time at university.

Therefore, use this book to note down your thoughts and experiences throughout the year.

You will be required to write prose when you fill in the final competence report as part of your online application.

Throughout this handbook we have provided various examples for you. Some of these take the form of bullet point entries, whilst others are longer prose. These longer answers are what we will be looking for when you complete your competence report.





My work goals

-
-
-
-
-
-
-
-
-
-
-
-
-
-
-
-
-
-

About The Science Council

The Science Council supports and recognises professional scientists and science technicians, across all disciplines of science, throughout their careers.

Case study

Suzanne Davies RSci gained Registered Scientist status in 2016. She now works for PepsiCo.

Why did you decide to work towards Registered Scientist status and what were you hoping to achieve by doing so?

The potential to apply for RSci was first introduced to me during my placement year. As soon as I heard about this I was very keen to get involved. I often think that Food Science as a degree isn't respected as being as scientific as the core sciences. Therefore, being given the opportunity to gain a professional competence based award that further supports the degree I have studied was very attractive. And something more to add on my CV is never a bad thing!

How has being a Registered Scientist helped you get on to the first step of the career ladder after graduation?

After graduation, I was offered a job with my placement company, PepsiCo. Therefore, my performance throughout the year whilst on placement was very valuable. Keeping a record of all this continuing professional development as part of being a Registered Scientist will really help me in future job interviews internally within PepsiCo or externally.

"Having something on your CV that stands out from other applicants, in addition to academic qualifications, is always an advantage and something I will continue to update in the future."

What advice would you give to those who are just starting the process of working towards RSci?

You will be surprised how soon the work you carry out is relevant towards your application. Often, 6 months into your job, you can forget about a lot of the smaller achievements that could still be relevant. It can also give you an idea of what of you need to do and focus on during your placement, helping you identifying areas in which you are lacking appropriate examples of competence.

Through your work experience you should be able to meet many of the competences, and then you can start to focus on developing yourself in the areas where you are struggling.

If you do gain your Registered Scientist status, make sure you use it! Put it on your CV, your LinkedIn profile and when someone asks you the significance of this award, you can explain the hard work that's gone into it.

1 Interpersonal and Communication Skills



This section asks you to highlight examples of your interpersonal and communication skills. Below you will find the competences you need to fulfil and some examples of how you could complete them.

☑ Demonstrate effective and appropriate communication skills

Scientists must be able to communicate effectively within the workplace in order to progress. Therefore, note down examples that demonstrate your communication and social skills. For instance, you may explain how you

present work to your team, or how your written reports clarify your thoughts. Alternatively, you could describe how you determine objectives with your supervisor and update them on your progress.

Example

- Agreed aims with supervisor during 1:1 meetings
- End of year poster presentation
- Shared and reflected on the work that I completed this year through written reports
- Presented in department meetings
- Worked interdepartmentally, with both the Chemistry and Geology departments
- Trained my colleagues on the work I had completed

My notes

A series of horizontal dashed lines provided for taking notes.